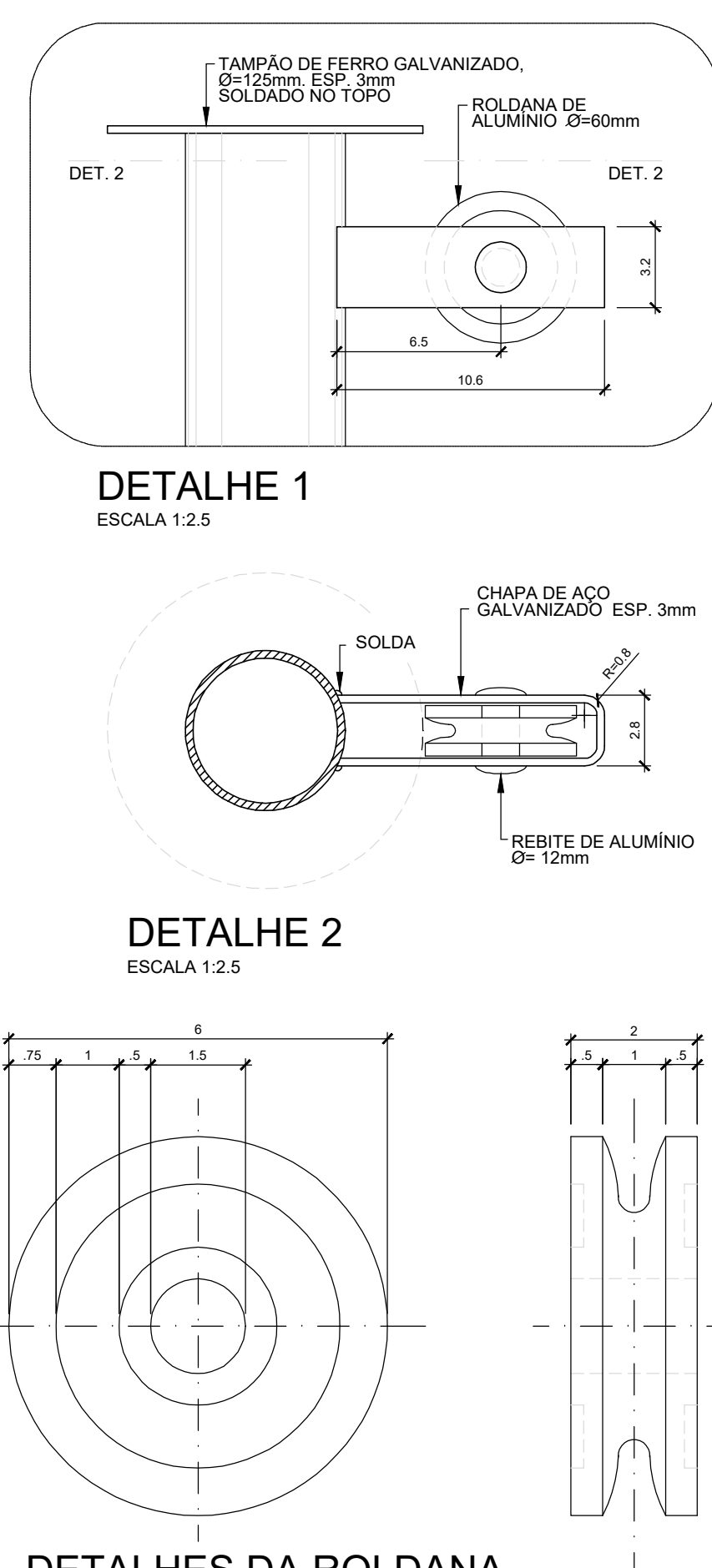
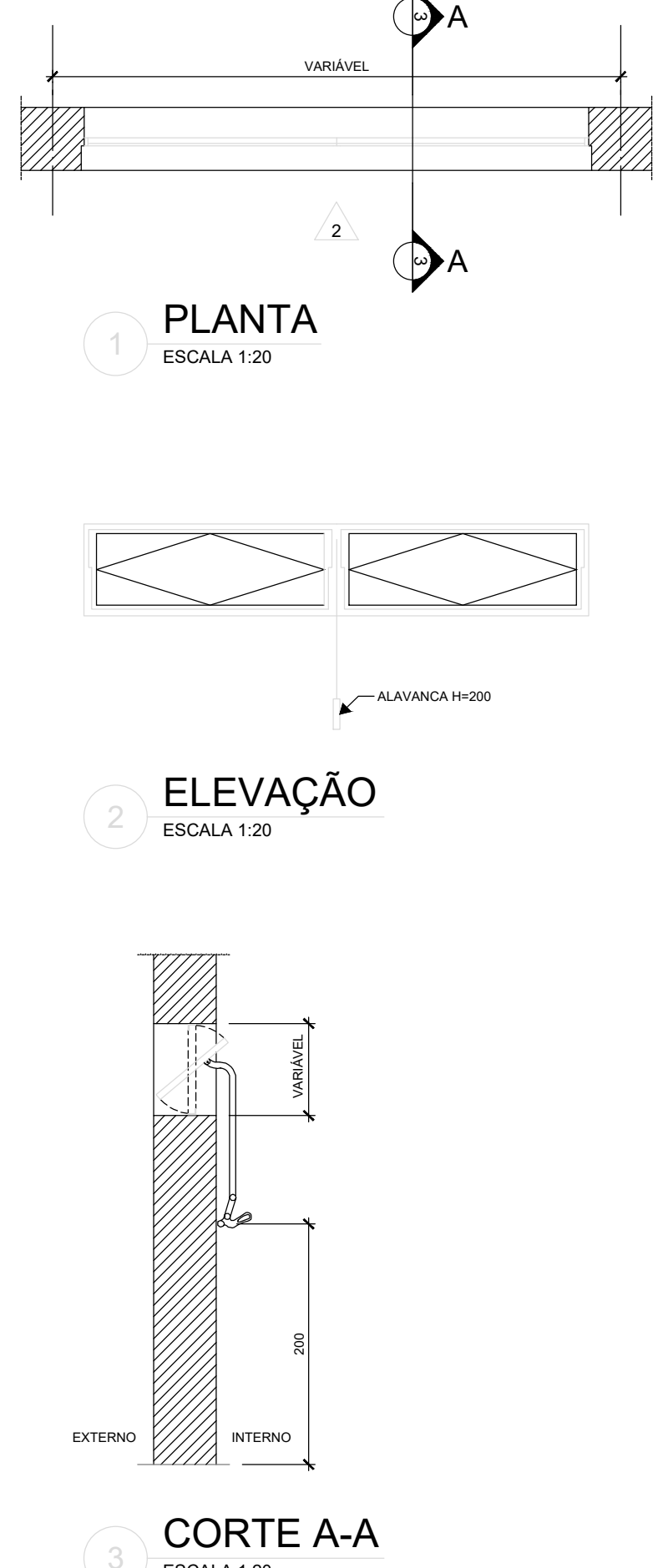


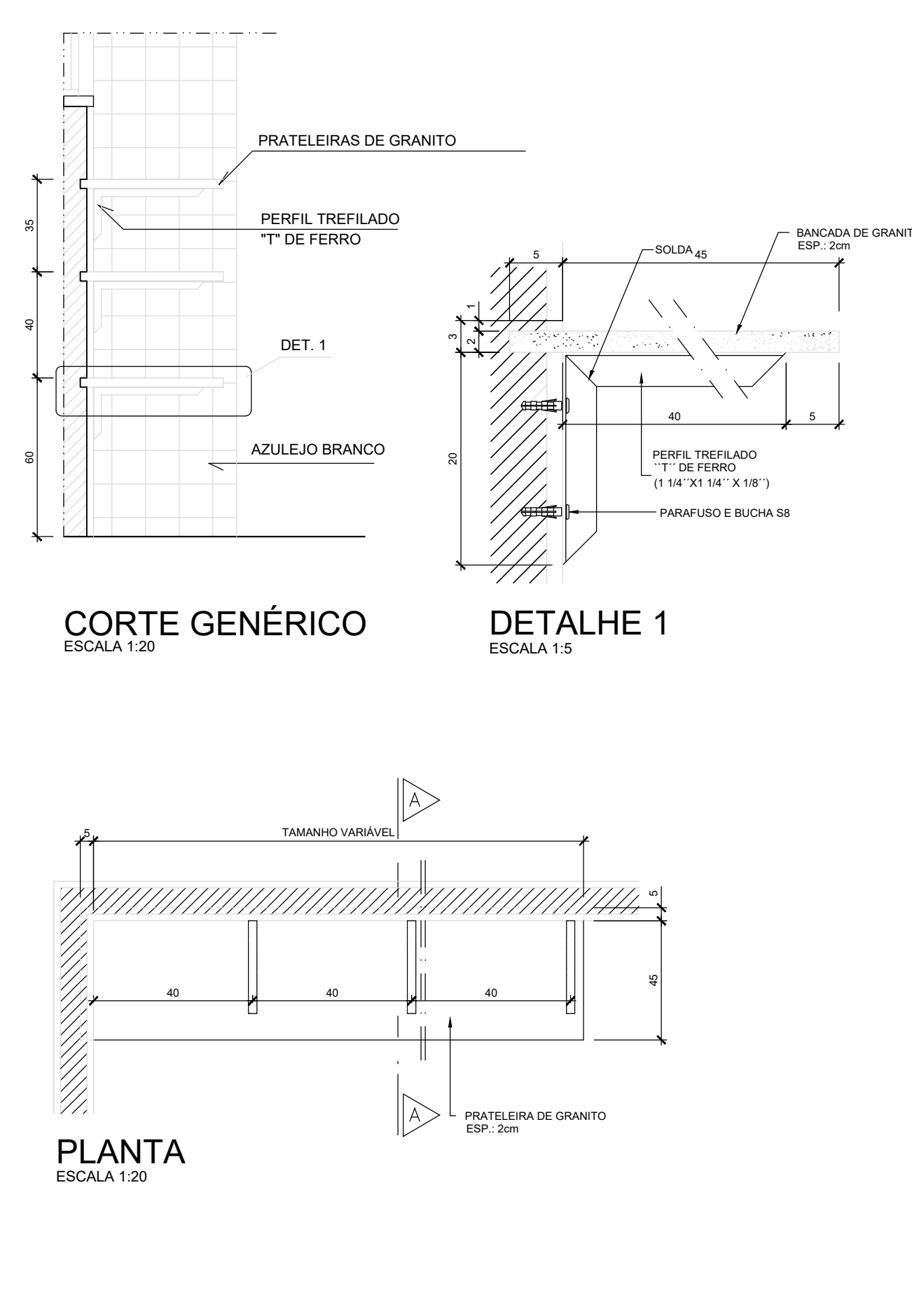
DETALHE MASTROS PARA BANDEIRAS 01/02



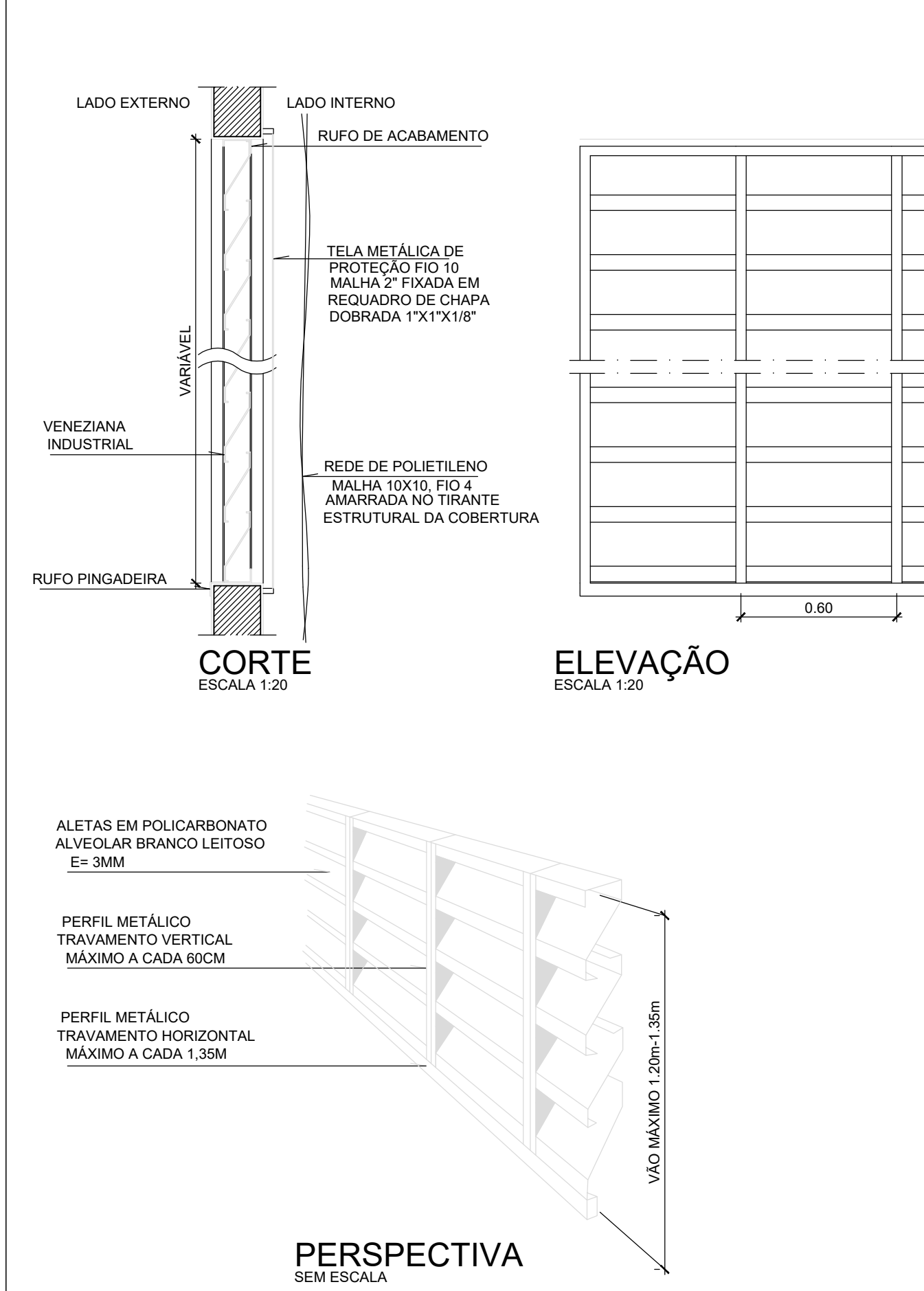
DETALHE MASTROS PARA BANDEIRAS 02/02



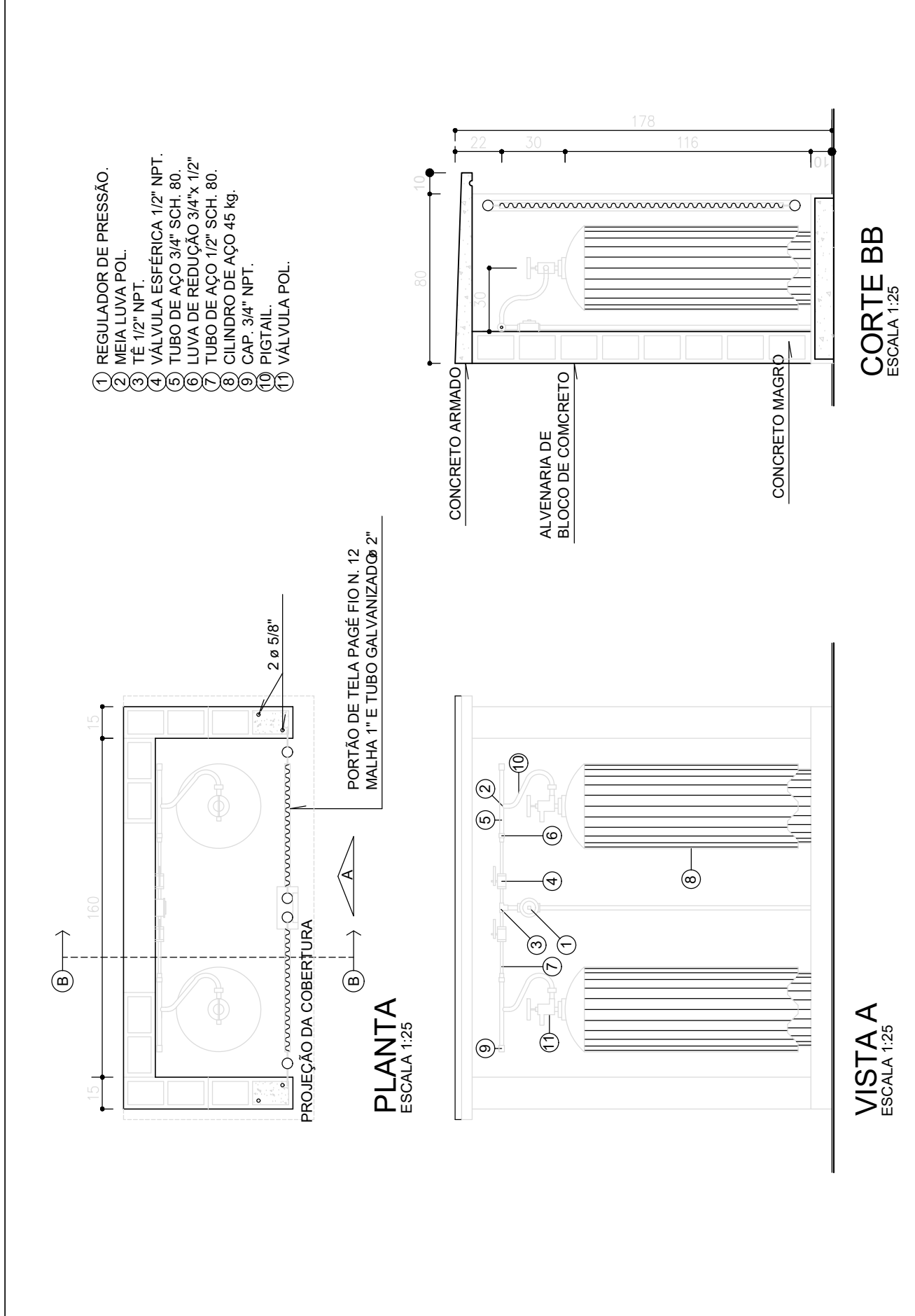
DETALHE ALAVANCA VENTILAÇÃO CRUZADA ÚNICA



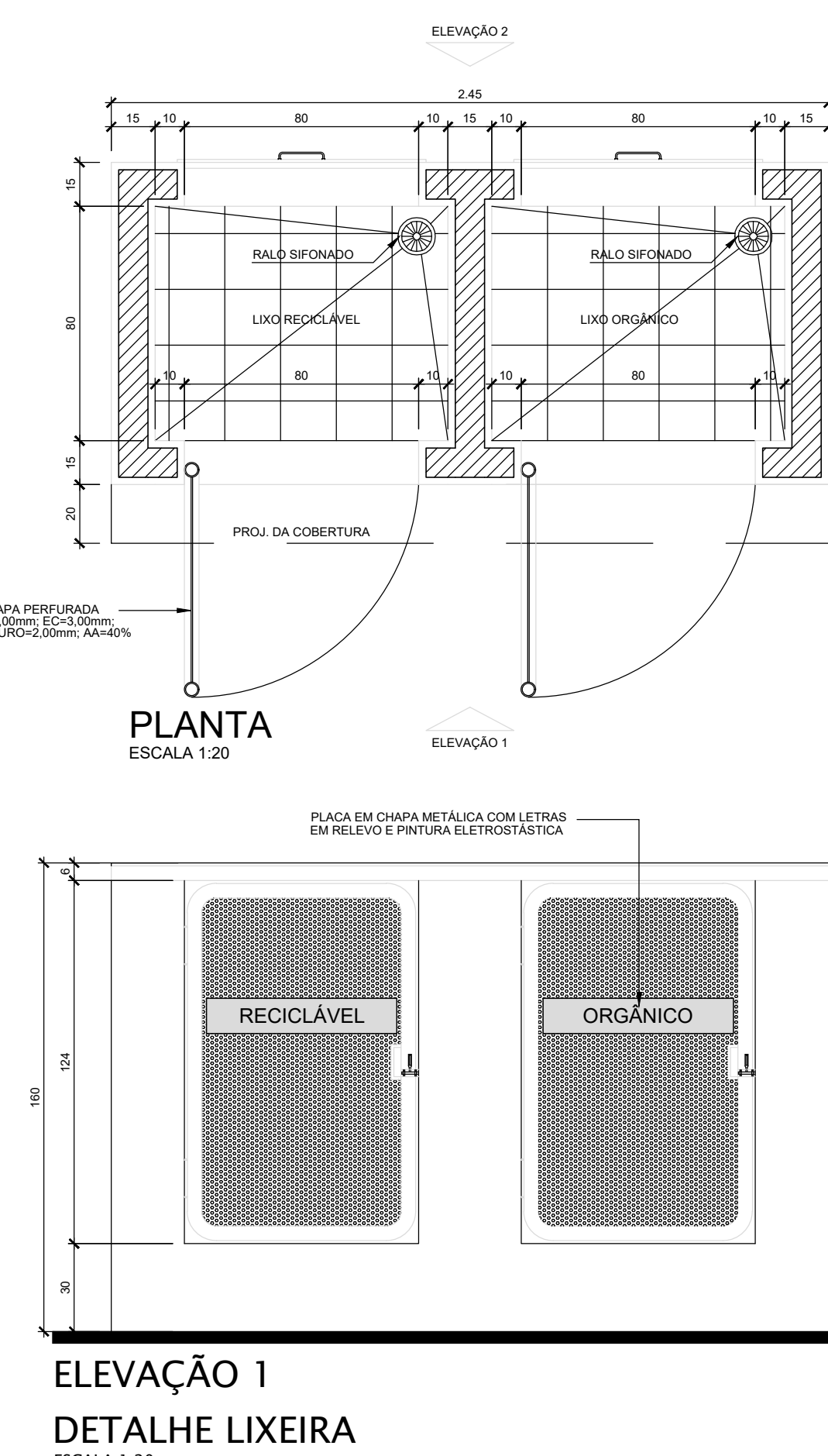
DETALHE DA DESPENSA - PRATELEIRAS ÚNICA



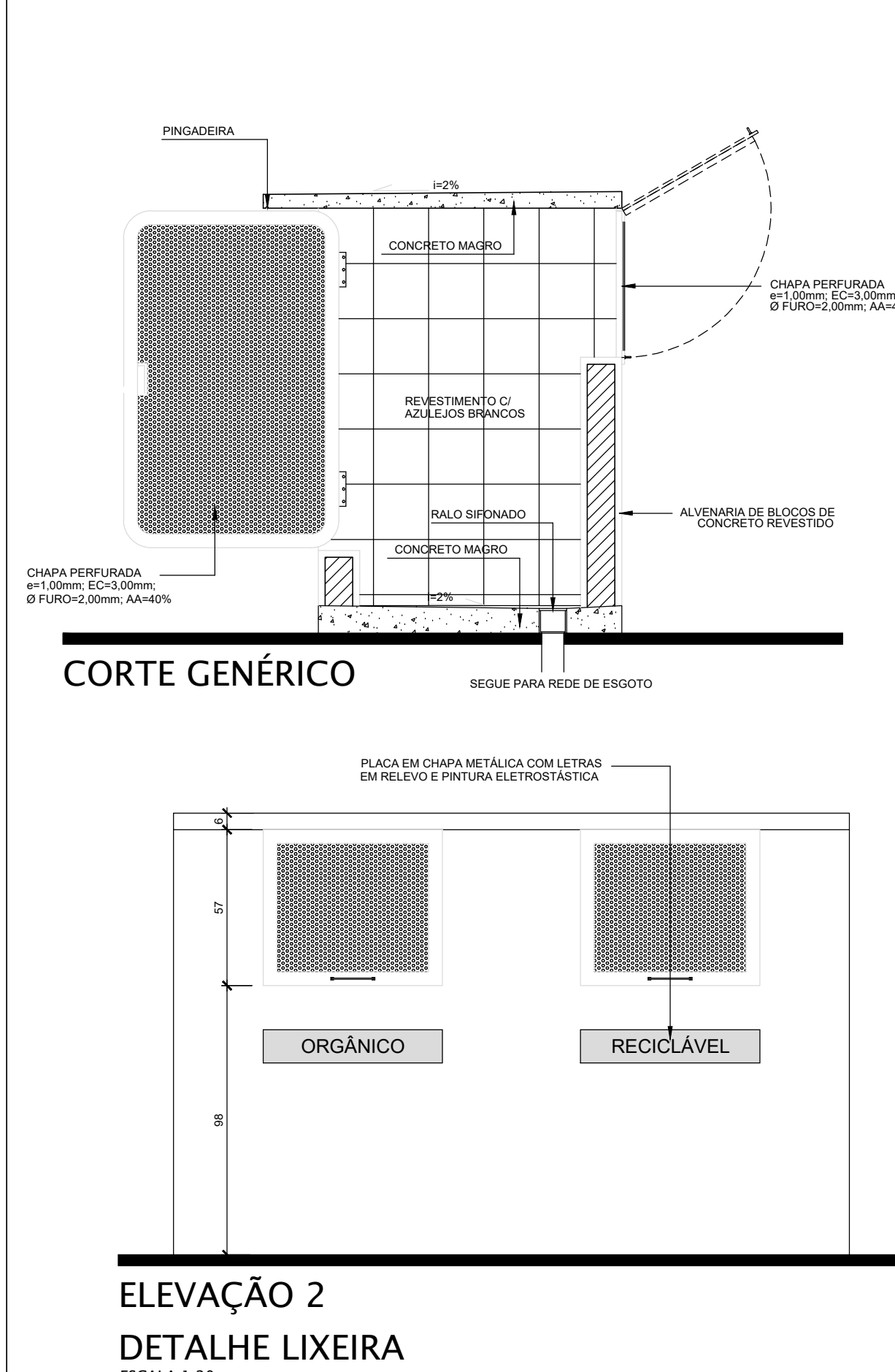
DETALHE VENEZIANA INDUSTRIAL ÚNICA



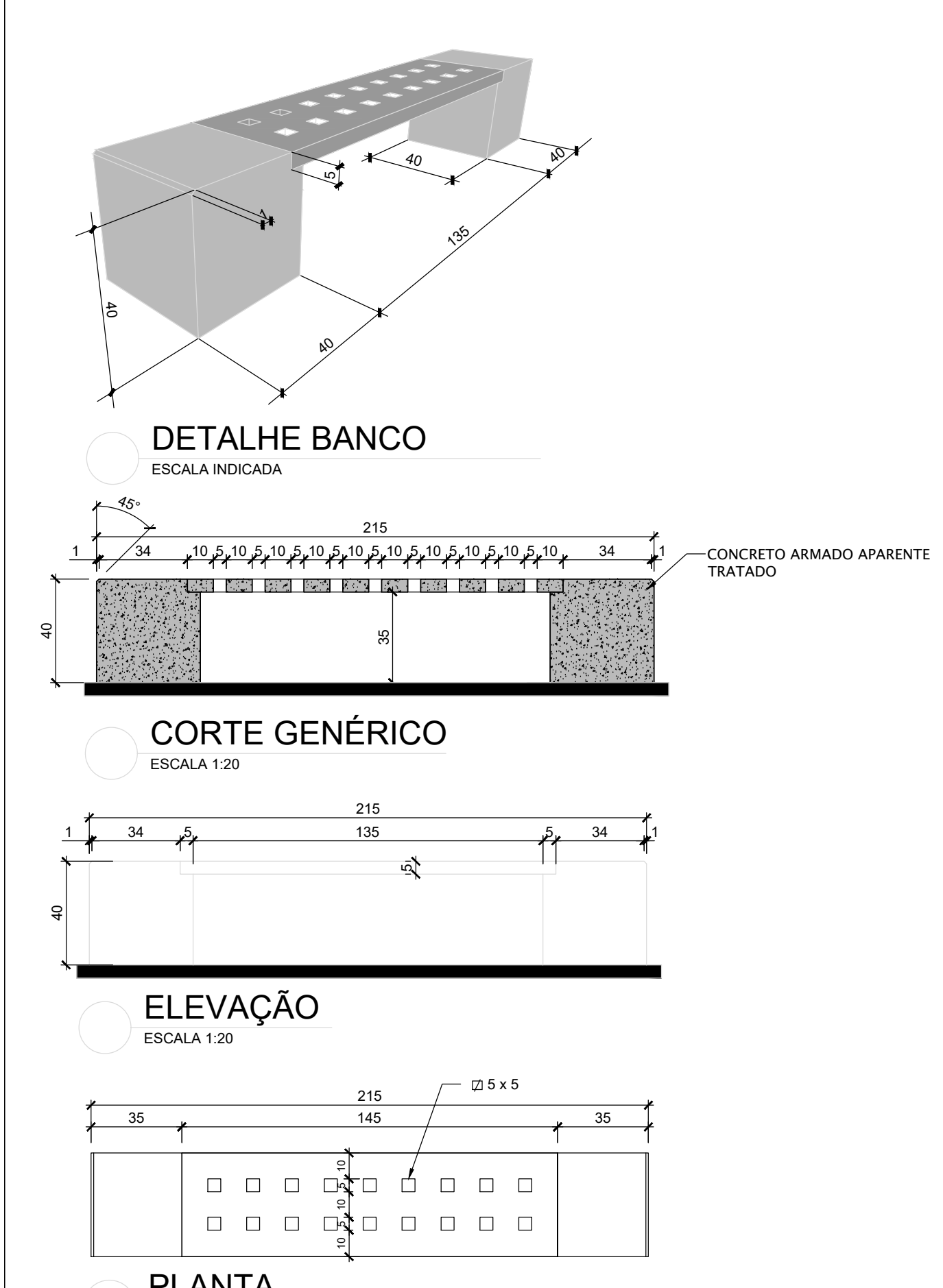
DETALHE ABRIGO DE GÁS P/ 2 CILINDROS ÚNICA



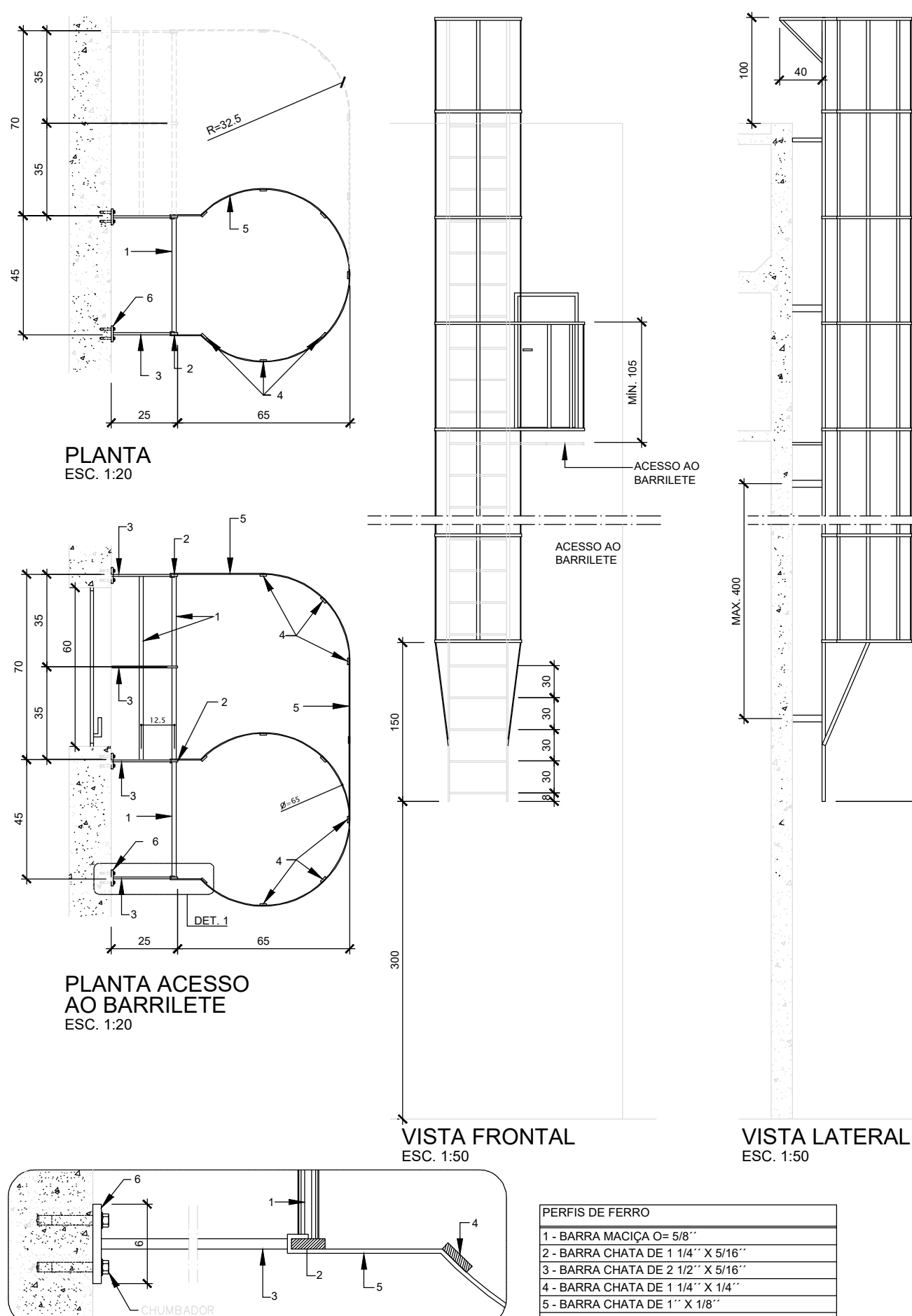
DETALHE LIXEIRA 01/02



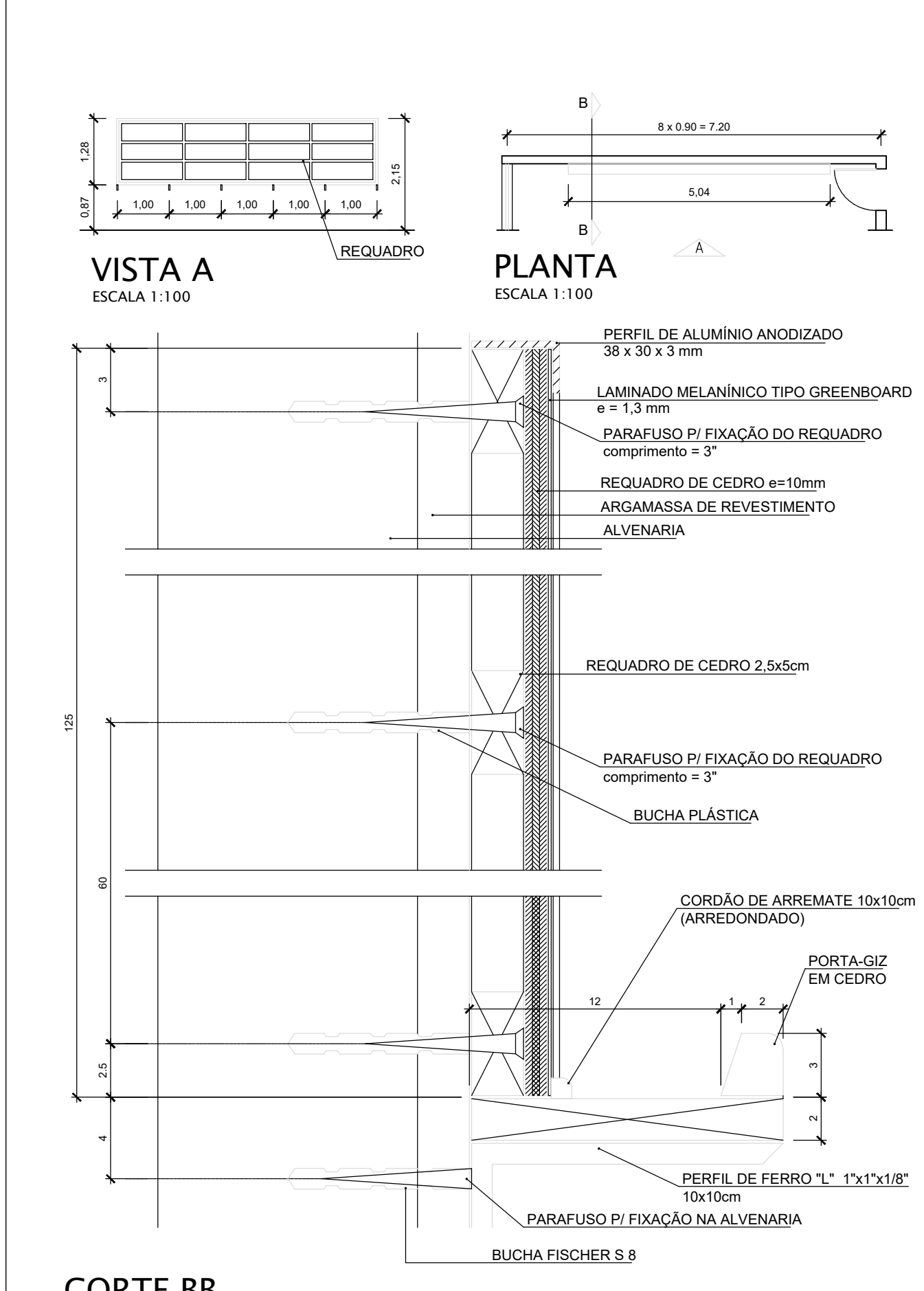
DETALHE LIXEIRA 02/02



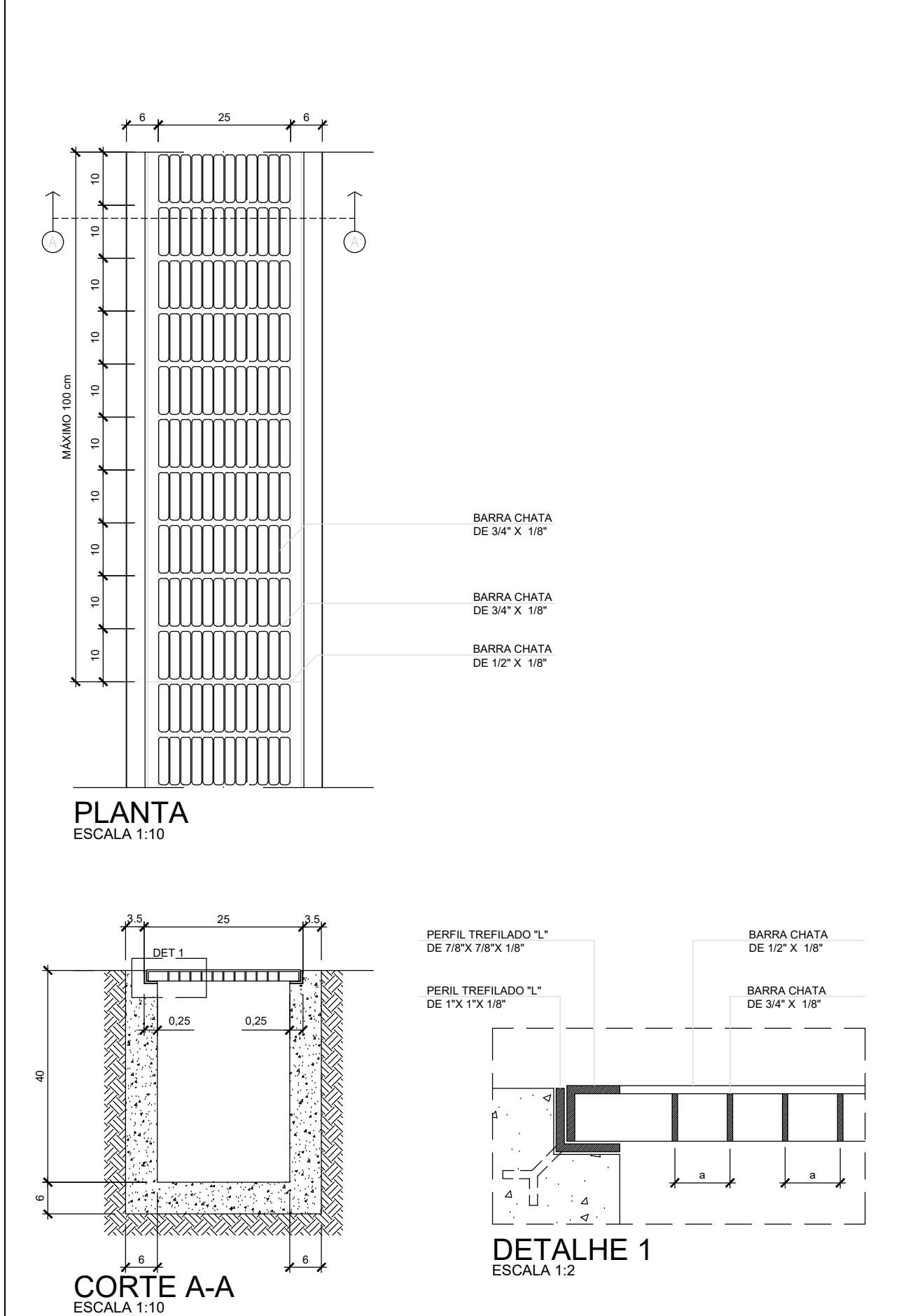
DETALHE BANCO DE CONCRETO ÚNICA



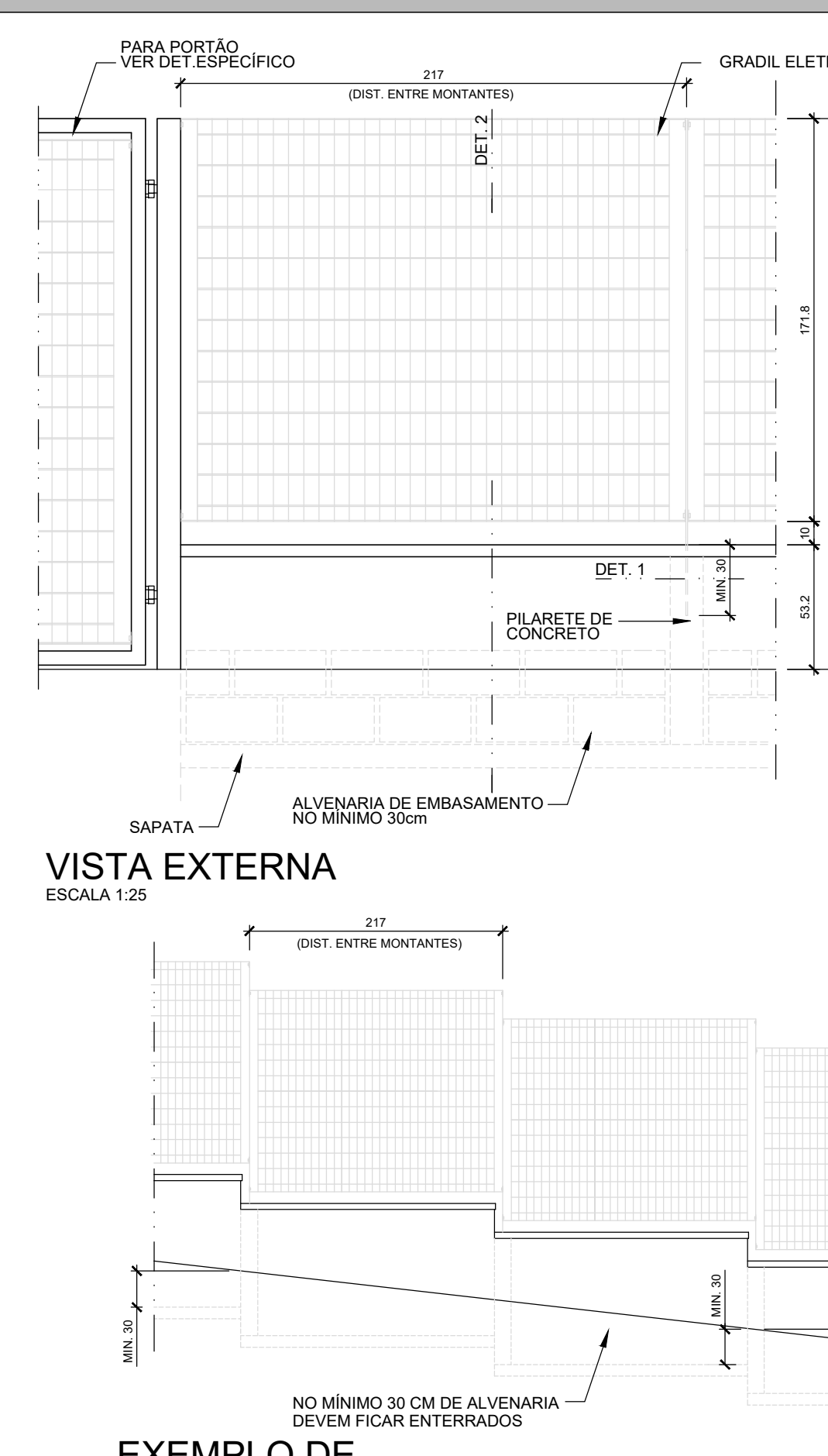
DETALHE ESCADA MARINHEIRO COM GUARDA-CORPO ÚNICA



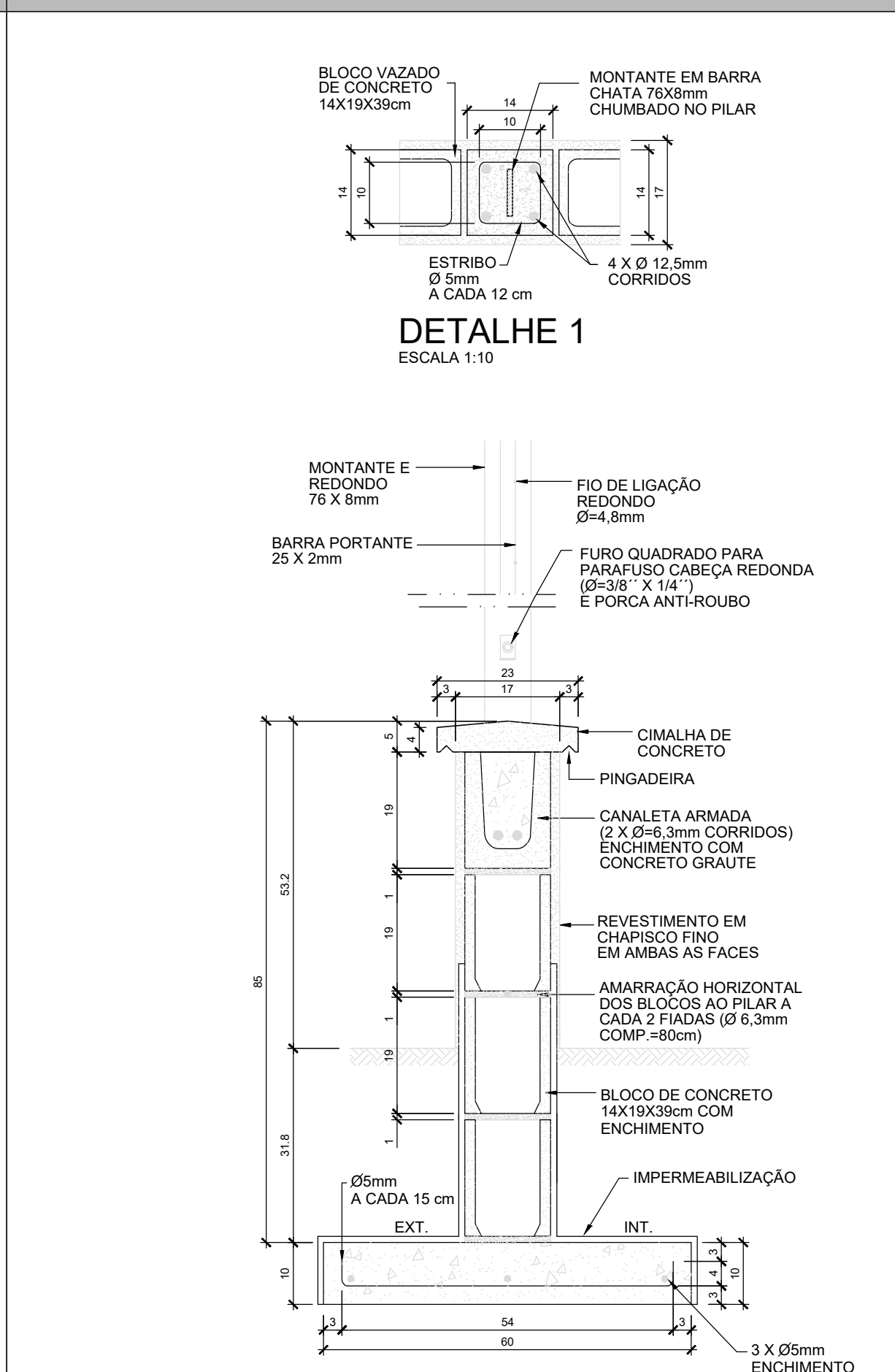
DETALHE LOUSA GREENBOARD (C=504cm) ÚNICA



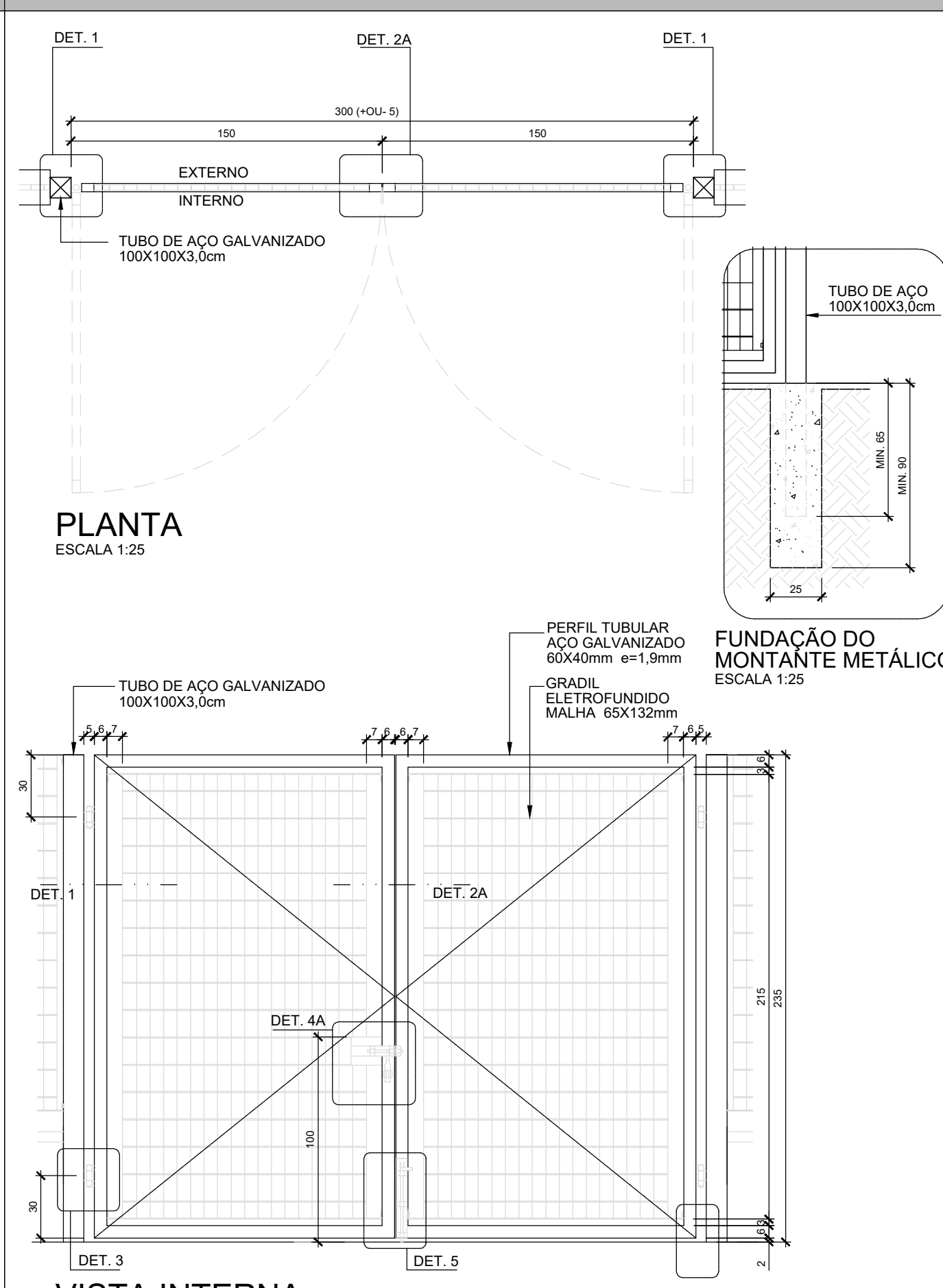
DETALHE CANALETA A.P. COM TAMPA DE FERRO GALVANIZADO ÚNICA



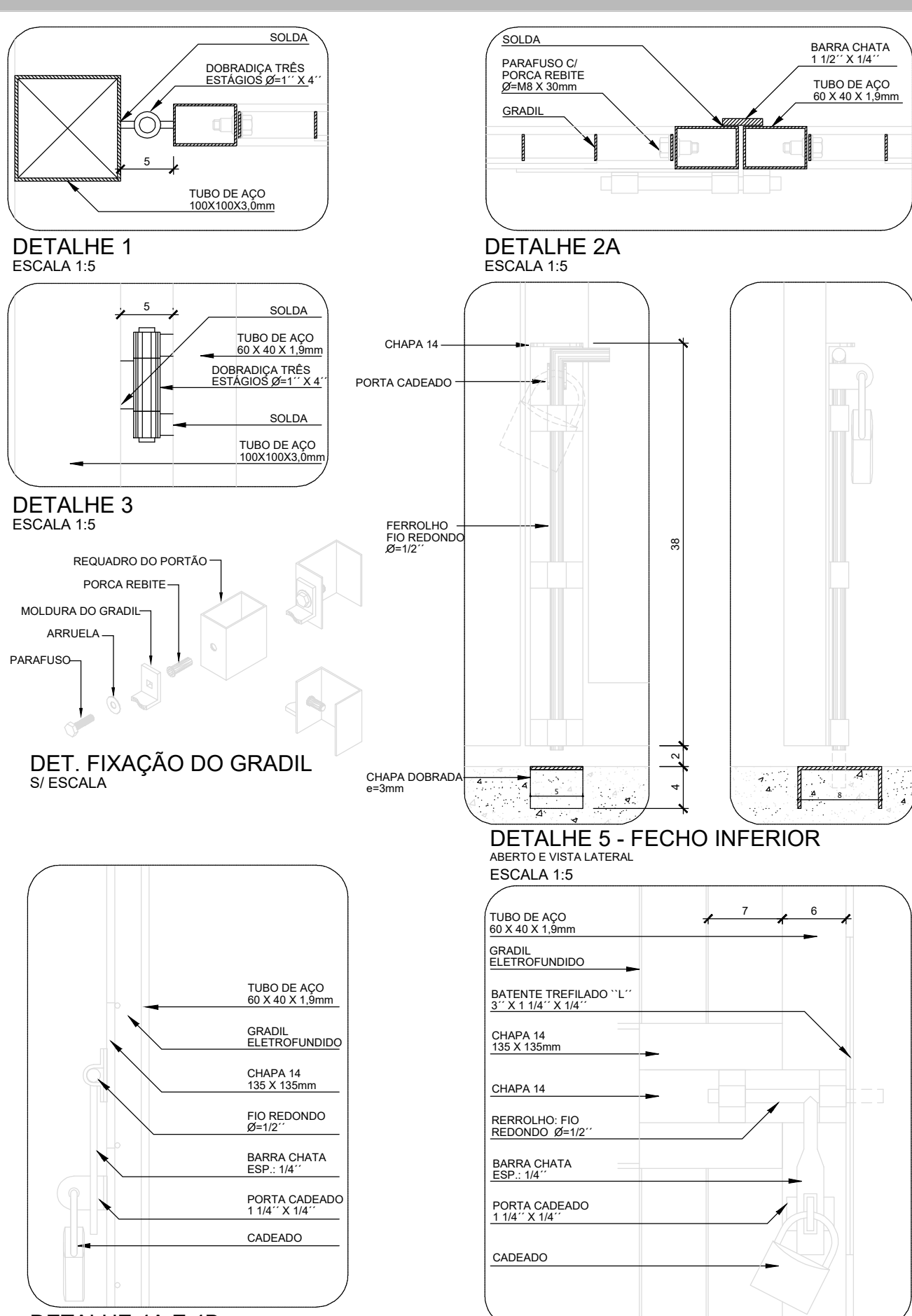
DETALHE GRADIL ELETROFUNDIDO 01/02



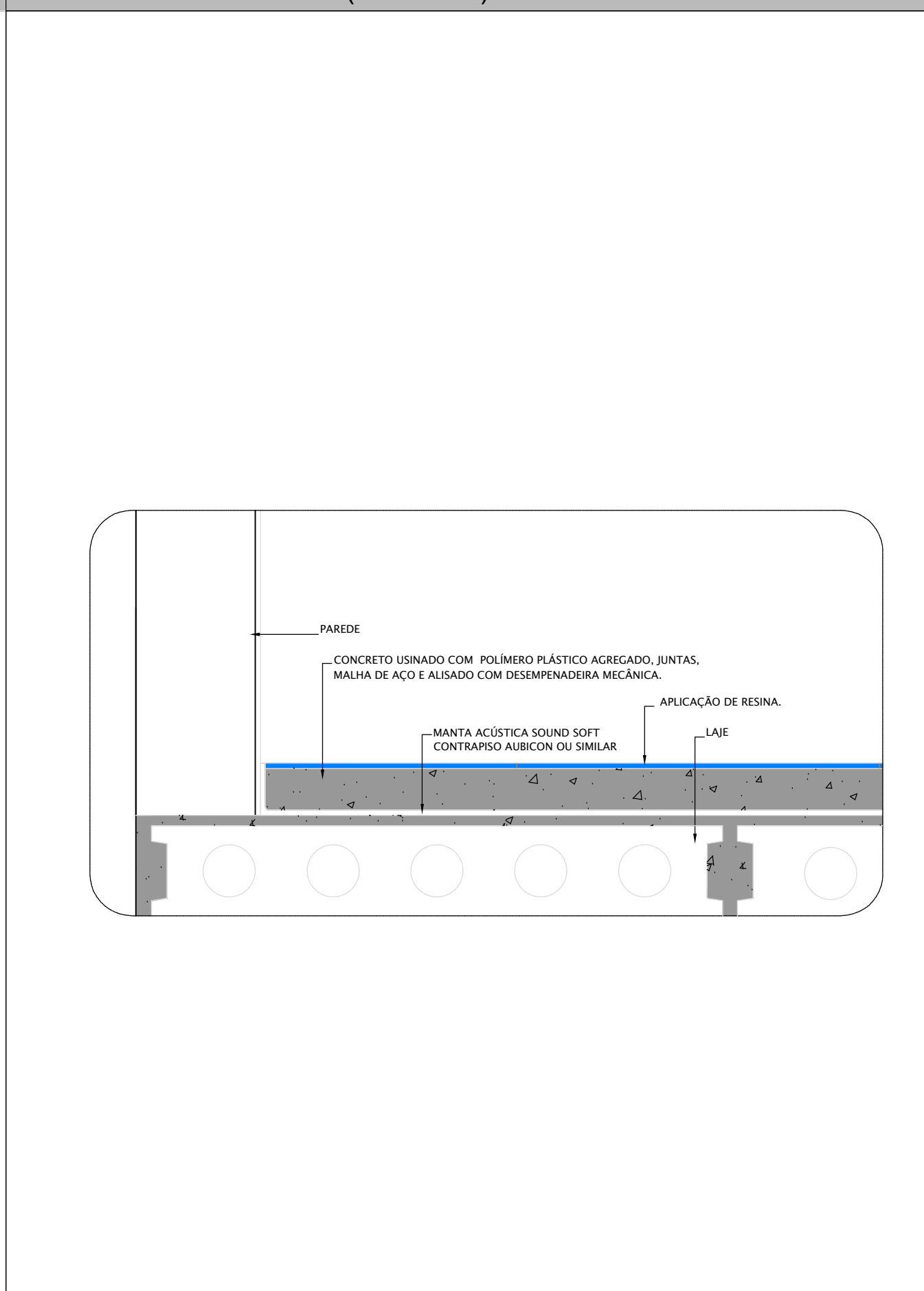
DETALHE GRADIL ELETROFUNDIDO 02/02



DETALHE PORTÃO EM GRADIL ELETROFUNDIDO 01/02



DETALHE PORTÃO EM GRADIL ELETROFUNDIDO 02/02



DETALHE DETALHE DO PISO DA QUADRA ÚNICA

PREFEITURA MUNICIPAL DE BARUERI
SECRETARIA DE OBRAS

OBJETO: CENTRO COMUNITÁRIO VALE DO SOL

DETALHES: ENTRE AS RUAS TÂMISA E NILO

ESCALA INDICADA: 03/05

ROSA MARIA CARDOSO ROCHA ZANETTI
NOME DO ARQUITETO: CENTRO DE COOPERAÇÃO - OUTUBRO 2022



Manifesto de Responsabilidade

Documento do Sistema

09F681005B028A121DC8A0CBA5E

O documento acima proposto pelo manifesto realizado por **AMANDA BORTOLINI E SILVA** registrado sob a matrícula **027709** na data **02/03/2026** **16:26:08** na Fase **ELABORAR PROJETO**.

Arquivo: ARQ CENTRO COMUNITÁRIO VALE DO SOL_FL03.pdf

Tipo de Documento: DOCUMENTO DE PROJETO

HASH DO DOCUMENTO

96FB70E2-7CB0-49F6-8CEE-AA93F998ED06

